



## ESL Provider Network

April 28, 2017

1:00 – 3:00 pm

# Agenda

1:00	Welcome and Introductions
1:10	EPN Shout-Out
1:30	ALLIES, AEBG Consortia and Policy Updates
2:10	Immigrant Integration Framework
3:00	Close

## **EPN Shout Out**

*Innovations and Updates*

# 2017 ALLIES Updates



## Website and communications

- Upgraded ALLIES website: [www.allies4innovation.org](http://www.allies4innovation.org)
- Newsletter
- Social Media: [www.facebook.com/allies4innovation](http://www.facebook.com/allies4innovation)  
LinkedIn
- Email: MailChimp – add to your contacts  
[ilse@allies4innovation.org](mailto:ilse@allies4innovation.org)>[via](mailto:ilse@allies4innovation.org) mail150.suw14.mcdlv.net

## Strategic Planning

## Core work areas

Immigrant Integration, EPN, Policy Advocacy, Workforce Development

# AEBG Consortia Updates



GAVILAN REGIONAL  
**ACES** ADULT & CAREER  
EDUCATION SERVICES





# Pathways to Success

"No wrong door"





# NSCCSTC Workshop Update

- Professional Development
  - Universal Design Workshop at Foothill
- Student Support Services
  - Adult school and Foothill campus tours for adult school and Foothill Staff
  - Presentations by CC staff on resources available to enrolled students
  - College Fair/Job Fair
- ESL “Core”
  - CC ESL course sequences and correlations to adult school levels
  - Pilot placement testing at DeAnza and Foothill





# NSCCSTC Workshop Update

- CTE/HSE/ABE/ESL-Articulation and Alignment
  - “Comparison map” depicting adult school courses for HSD vs. GED/ABE/ASE students
  - Proposal to create a marketing committee to develop a presentation on adult schools for CC administrators
- Data
  - CCs figuring out if/how to implement CASAS testing
  - Colleges also in the process of implementing TopsPro

# Activities for 2016-17

- **Curriculum and assessment:** Faculty Work Groups, Aligning/ articulating Curriculum and Assessments; Articulation agreement among K-12 and CC ESL; Revising curriculum College and Career Readiness Standards (ABE & ASE)
- **Joint Professional Development:** AWD; Brain Research; Increasing rigor through all levels (Betsy Parrish); Integrated basic skills (IBEST); 21<sup>st</sup> Century Employability Skills
- **Instruction:** Transition Programs; Co-location; Bootcamps; Short-term workshops; Bridge to College courses; Expanded non-credit in community college
- **Student Guidance and Support:** Transition Specialists at all campuses; AWD Support; Regional Resource Center (SparkPoint, Second Harvest, etc.); Immigrant Integration Framework



*South Bay Consortium for Adult Education*

# Proposed Activities for 2017-18

*sbcae.org*

- **Rigor:** College and Career Readiness Standards (English Language Proficiency Standards for Adult Education); professional development (w/community partners?)
- **Prototyping counseling tools:** Immigrant Integration Pathway Framework (w/community partners?)
- **Expanded Outreach:** Multi-lingual, multi-media publicity campaign to underserved communities (w/community based organizations?)
- **Building Integrated Data Systems:** Real time case-management (w/community partners?)
- **Developing Annual, and New Regional Plans:** (w/community partners?)



*South Bay Consortium for Adult Education*



# Gavilan Regional Adult and Career Education Services: *Making Connections*



GAVILAN REGIONAL  
**ACES** ADULT & CAREER  
EDUCATION SERVICES





# 16/17 Developments

- Increased support services: Disability student service, counseling
- Immigrant Education and ESL: dual-listed and computer classes; childcare partnership with First 5
- CTE programming: Entrepreneurship, Spanish for Health Professionals, Hospitality and Tourism
- New HSD program
- Retirement of MHCAS principal



# Policy Updates

- Entering the third year of **AB104**: the Legislature wants results.
- **WIOA** funding at the federal level: cut by 20%?
- **WIOA** Title I and Title II: ESL/Basic Skills blended with Job Training.
- **Immigrant Integration** and policy.
- **SB68**: Undocumented adults attending CC as California residents.

# Immigrant Integration Framework



# Project Overview

ALLIES mission:

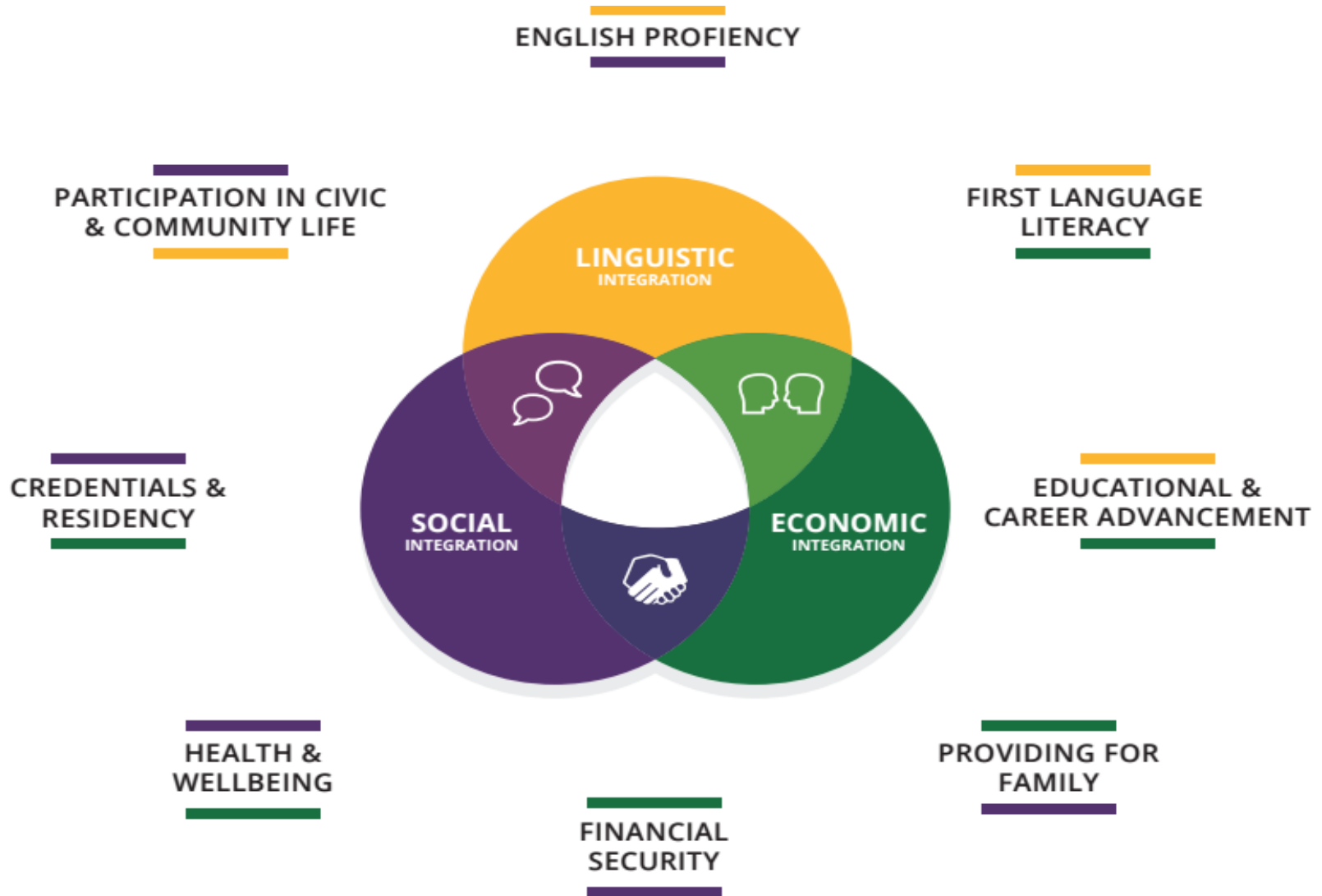
**Support English-learner adults in achieving success in their educations, careers and communities.**



- Alliance for Language Learners Integration, Education and Success
- Validate the broad role of ESL providers in welcoming New Americans



# Immigrant Integration Framework



# What's Next?

- Share and promote the Framework
- Prototyping
- Policy Advocacy
- Catalyze Innovation
- Sharing of best practices



# Immigrant Integration Panel Discussion

- Health and Well-Being:  
**Roberto Gil, Sacred Heart Community Services**
- Participation in Civic and Community Life:  
**Nancy Ducos, City of Mountain View**
- Credentials and Residency:  
**Sheryl Munoz-Bergman, International Institute of the Bay Area**

